



ADIBA COURT  
BURMA HILLS



MADIBA COURT  
BURMA HILLS





ADIBA COURT  
BURMA HILLS

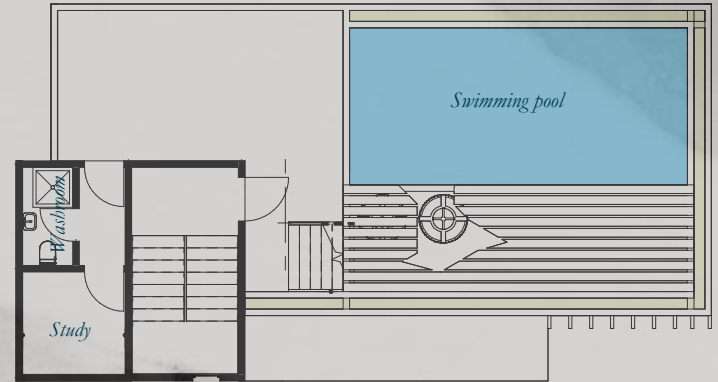
*Madiba Court is a private residence with Ten (10) contemporary family homes nestled in Accra's most sought-after executive location, Burma hills. Nestled around this pristine development is an assorted array of convenience services such as first-class schools, restaurants, hospitals and shopping centres. Madiba Court is a residential address that meets the requirement of a secured and peaceful community with aesthetic modern architecture and sublime finishing. Relocate to Madiba Court in any of our new 4 bedroom family homes and inherit a rare opportunity to enjoy a luxurious living experience.*

MADIBA COURT  
BURMA HILLS

## Ground Floor



## Second Floor



## First Floor



### Spaces

Balcony	16sqm
Other Bedrooms(3)	48sqm
Master Bedroom	25sqm
Walk-in Closets(3)	15sqm
Family Area	14qm
Recreational Area	130sqm
Living Area	30sqm
Kitchen	17sqm
Dining Area	14sqm
Office Area	7sqm
Boys Quarters	6sqm
Washrooms(6)	32sqm
<b>Total Gross Area</b>	<b>382sqm</b>

### Sizes

**MADIBA COURT**  
BURMA HILLS





MADIBA COURT  
BURMESE LIFESTYLE

MADIBA COURT  
BURMA HILLS





MADIBA COURT  
BURMA HILLS



MADIBA COURT  
BURMA HILLS





MADIBA COURT  
BURMA HILLS



MADIBA COURT  
BURMA HILLS





MADIBA COURT  
BURMA HILLS





MADIBA COURT  
BURMA HILLS



MADIBA COURT  
BURMA HILLS



MADIBA COURT  
BURMA HILLS





# Development Features

## Interior Features

1. *Panelled / Flush doors*
2. *Recessed ceiling lighting*
3. *Fitted Wardrobes*
4. *Air conditioning units*
5. *TV Connectivity*
6. *Fully Fitted Kitchens with Appliances; Refrigerator, Hob & Extractor, Oven, Microwave; Washing Machine.*
7. *Bathrooms with Porcelain Tiles.*
8. *Tempered Glass Balustrades*
9. *Water Heating Systems*

## Exterior Features

1. *Gated Development*
2. *24-hour Security*
3. *Roof top area with optional pool*
4. *Backup Water & Power Supply*
5. *Electric Security Fencing*
6. *Property Management*
7. *Car Parking*
8. *Fire Escape Staircase*
9. *Fire Protection and Safety System*



# The Development



## Standard Payments

### Option 1

Reservation \$5,000

- 20% down payment
- 80% balance spread over 12 Months

## Flexi Payments

### Option 2

Reservation \$5,000

- 20% down payment
- 80% balance proposed by buyer but within 18 Months

## Mortgage Payments

### Option 3

Reservation \$5,000

- 20% -30% down payment
- 80% - 70% balance by Mortgage.

# *The Developer*

## **Whitewall Properties Limited**

*Whitewall Properties Limited is a Ghanaian owned real estate company that develops unique apartments and townhouses for residential and or investment purposes.*

*Our Vision is to ultimately be the preferred real estate developer in Ghana, Delivering consistent quality in our products and customer service is the company's focal Mission.*

*Our Team is dedicated to providing an excellent experience to ensure value, reliability and satisfaction is achieved.*

*For further information about our new products and services, kindly contact us via the details below;*

*Head Office,*

*21 Dzaniño Street East Legon, Accra - Ghana*

*+233 (0)50 7010 855*

*+233 (0)50 1501 611*

*sales@whitewallproperties.com*

*www.whitewallproperties.com*





STANDARD DISCLAIMER: This brochure, the accompanying "Floorplans and Pricing" and marketing materials and the information contained in them does not form any contract, and while reasonable effort have been made to ensure accuracy, this cannot be guaranteed and no representation or warranty is made in that regard. The brochure and plans and any marketing material are for informational purposes only and disclosed to prospective purchases without responsibility to the seller and are not intended to be relied on. Nothing herein is intended and nor shall it be construed as an attempt by the seller to exclude or limit liability for fraud or fraudulent misrepresentation or for any other liability which cannot be excluded or limited under applicable law. The seller reserves the right to make changes in the interest of improving the overall scheme. The specification and plans of the apartment shown in the brochure and on the plans and any marketing literature is the anticipated specification and plans as at the date this brochure and any marketing literature was prepared. Any areas, measurements or distances shown in any text or plan are approximated and for informational purposes only and may be different once actually constructed. Computer generated images and photos are indicative only and cannot be guaranteed to represent the complete details of the development. Furniture shown in any computer generated images and photos is not included in sales. Any reference to alterations to or use of any part of the development is not a statement, representation or warranty that any necessary planning, building regulations or other consent has been obtained. These matters must be independently verified by the buyer. Any buyer must satisfy himself by inspection or otherwise as to the accuracy of any information given. All sales remain subject to contract. Purchase prices correct at time of publication subject to change and availability.