

# ARLINGTON

COURT - EAST LEGON





*Discover True Comfort*  
**ARLINGTON COURT**



*Discover True Comfort*

ARLINGTON COURT



**1 BEDROOM APARTMENTS**  
FLOOR PLANS AND PRICING

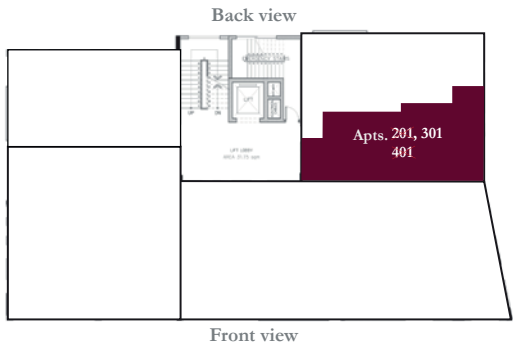
**ARLINGTON COURT**

# Studios | Apt 201

SPACES	AREA(sqm)
--------	-----------

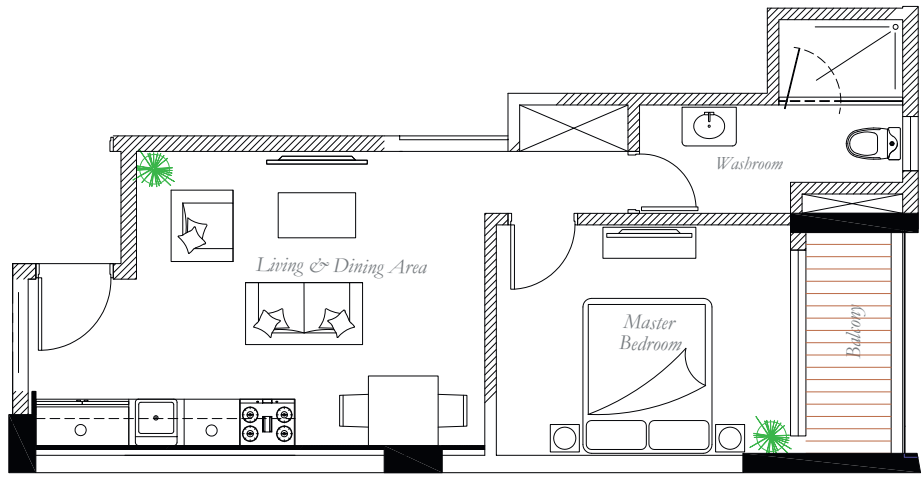
Living & Dining Area	20sqm
Master Bedroom	13sqm
Washroom	6sqm
Balcony	6sqm

**Gross Area 45sqm**  
**Price SOLD OUT**



Typical Floor Plan

## Floor 2-4



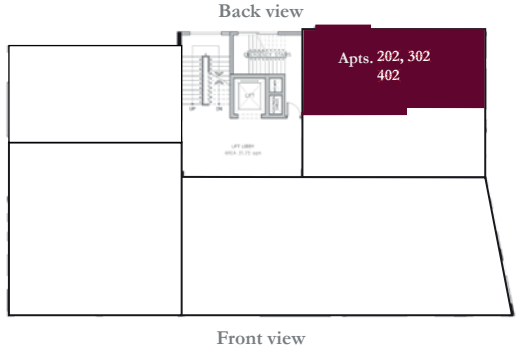
Second - Forth Floors

# 1 Bedroom | Apt 202

SPACES	AREA(sqm)
--------	-----------

Living & Dining Area	21sqm
Master Bedroom	17sqm
Washrooms	6sqm
Balcony	6sqm

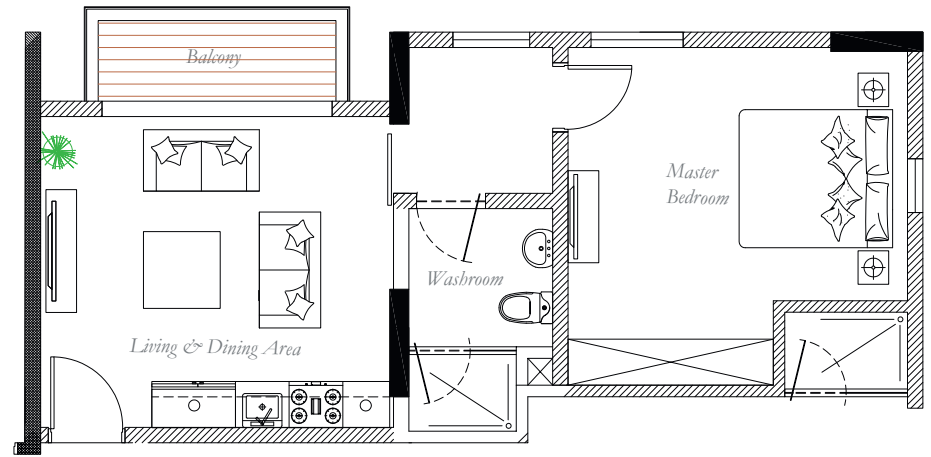
**Gross Area 50sqm**  
**Price SOLD OUT**



Second - Forth Floors

Typical Floor Plan

## Floor 2-4





**2 BEDROOM APARTMENTS**  
FLOOR PLANS AND PRICING

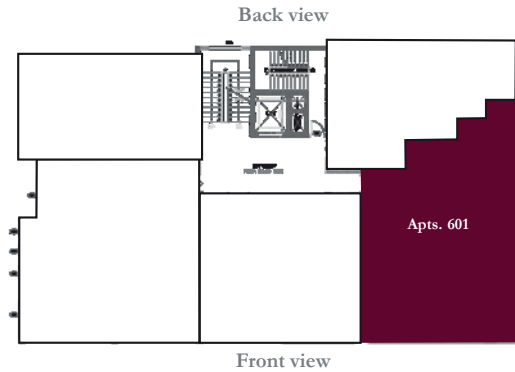
**ARLINGTON COURT**

# 2 Bedroom | Apt 601

SPACES      AREA(sqm)

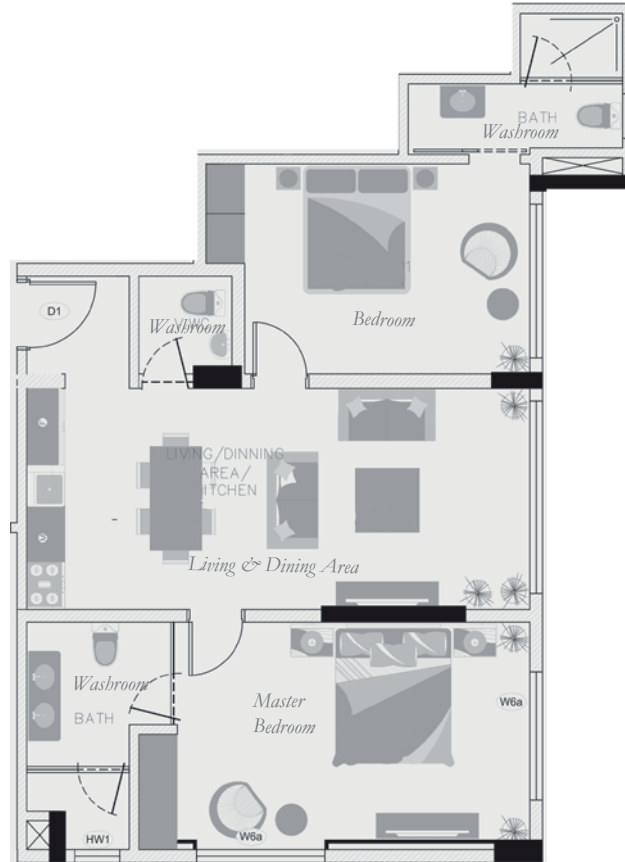
Living & Dining Area      35sqm  
Master Bedroom      21sqm  
Other Bedroom      16sqm  
Washrooms(3)      6sqm

**Gross Area      90sqm**  
**Price      \$195K**



Sixth Floor

Typical Floor Plan



Floor 6



# 2 Bedroom | Apt 304

## SPACES AREA(sq.m)

Living & Dining Area 45sqm

Master Bedroom 23sqm

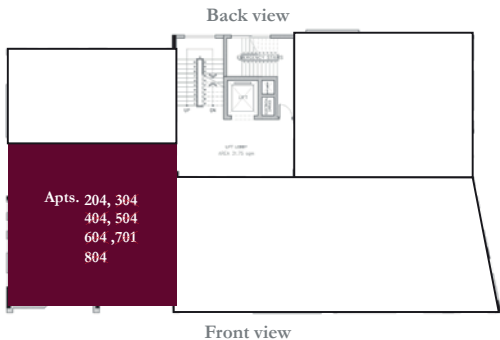
Other Bedroom 16sqm

Washrooms(3) 5sqm

Balcony 6sqm

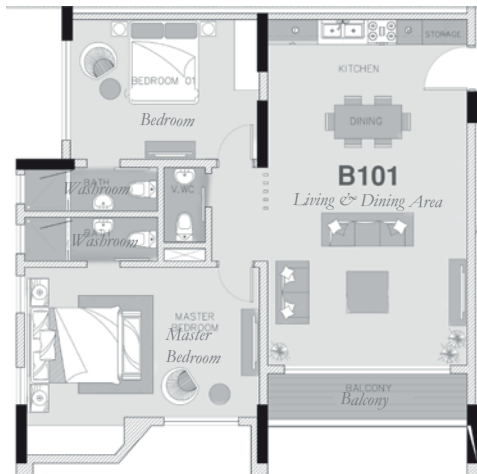
**Gross Area 109sqm**

**Price \$200k**



Third - Seventh Floors

Typical Floor Plan



Projected Floor Plan



Floor 2-8



# **3 BEDROOM APARTMENTS**

## FLOOR PLANS AND PRICING

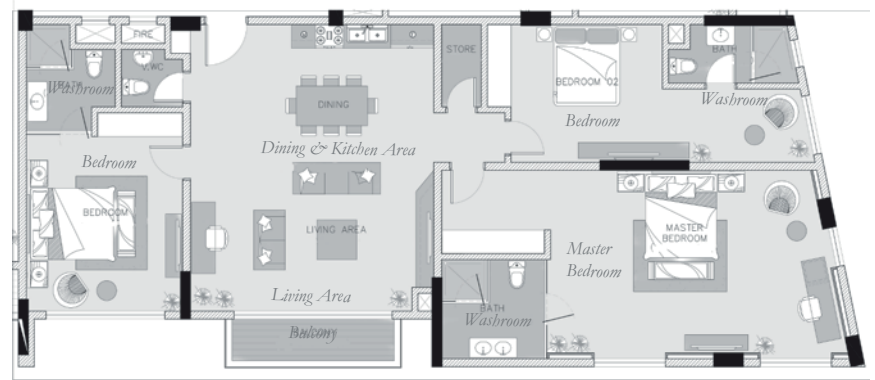
**ARLINGTON COURT**

# 3 Bedroom | Apt 305

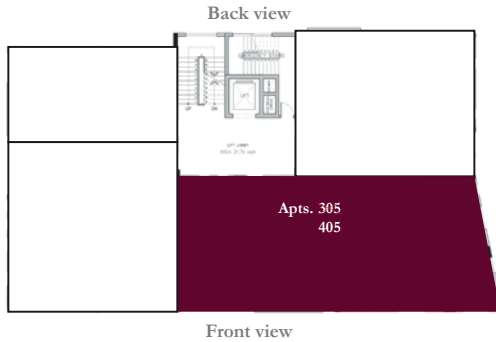
Floor 3-4

SPACES	AREA(sqm)
Living & Dining Area	47sqm
Master Bedroom	40sqm
Other Bedrooms(2)	23sqm
Washrooms(4)	7sqm
Balcony	6sqm
Store	5sqm
<b>Gross Area</b>	<b>175sqm</b>
<b>Price</b>	<b>\$320k</b>

Typical Floor Plan



Projected Floor Plan



Third - Fourth Floors

*Arlington Court is an exclusive residence with unique features of opulence such as it's exquisite design, spacious units and modern installations.*

*This 8 floor apartment with panoramic views covering several meters of Accra is designed to suit the affluent lifestyle of today's aspirational entrepreneurs.*

*Arlington court offers a collection of 1, 2 & 3 Bedroom apartments modeled in it's distinctive architecture which all buyers can choose from.*

*Arlington Court offers a modern design distinguished by it's open plan kitchen layout built with high-quality materials.*

*The rooftop lounge comes with views of the city's skyline, an infinity pool, play area and a bar. A fully equipped gymnasium with views from the eight floor.*

*Arlington court, designed for people who want more!!*

**ARLINGTON COURT**



# Development Features

## Interior Features

1. *Panelled / Flush doors*
2. *Recessed ceiling lighting*
3. *Fitted Wardrobes*
4. *Air conditioning units*
5. *DSTV connection*
6. *Fibre optic internet connectivity*
7. *Fully Fitted Kitchens with Appliances; Refrigerator, Hob & Extractor, Oven, Microwave; Washing Machine.*
8. *Bathrooms with porcelain tiles.*
9. *Tempered Glass Balustrades*
10. *Water Heating Systems*

## Exterior Features

1. *Gated Development*
2. *24-hour Security and Concierge Services*
3. *Roof top Recreational Area*
4. *Infinity Pool*
5. *Fitness Center*
6. *Backup Water & Power Supply*
7. *Electric Security Fencing*
8. *Property Management*
9. *Car Parking*
10. *Fire Escape Staircase*
11. *Elevator*
12. *Fire Protection and Safety System*





*Discover True Comfort*  
**ARLINGTON COURT**



*Discover True Comfort*  
**ARLINGTON COURT**



*Discover True Comfort*  
ARLINGTON COURT





*Discover True Comfort*  
ARLINGTON COURT



*Discover True Comfort*  
**ARLINGTON COURT**



AVERAGE  
DAILY  
IS 4% OF  
YOUR DAY  
**NO**

**ENDURANCE.  
DETERMINATION.  
DRIVE.**

FIND YOUR STRENGTH  
AND REACH YOUR  
GOALS WITH CARDIO  
TRAINING.

ARLINGTON COURT

*Discover True Comfort*  
**ARLINGTON COURT**



*Discover True Comfort*  
ARLINGTON COURT

ARLINGTON COURT

# Buy To Let Investor

## Porposal for the Buy to Let Investor

*Discerning buy-to-let investors recognise that a high and sustainable yield is their priority, and understand the drivers that underpin those results.*

*Arlington Court has the perfect equation: superb location for tenants, enticing residential facilities, and a luxurious development designed ideally for rental demand, all with market leading prices and investment plans to optimise your capital.*

### Investment Highlights

- *Average Monthly Yield : \$1,200 - \$2,500*
- *Average Annual Yield : \$14,400 - \$30,000*
- *Average Annual Rental Yield(%) : 9% - 12%*
- *Average Annual Appreciation Rate(%) : 7%*

### Standard Payments

#### Option 1

- *Reservation \$5,000*
- *4 Installments (every 6 months)*
- *8 Installments (every 3 months)*
- *24 Installments (every month)*

### Flexi Payments

#### Option 2

- *Reservation \$5,000*
- *20% down payment*
- *80% balance spread over 18 Months*
- *80% balance spread over 23 Months*

### Mortgage Payments

#### Option 3

- *Reservation \$5,000*
- *20% -30% down payment*
- *80% - 70% balance by Mortgage.*

**ARLINGTON COURT**

# EastLegon | LOCATION



# The Developer

## *Whitewall Properties Limited*

*Whitewall Properties Limited is a Ghanaian owned real estate company that commenced operations in 2012 with the aim of providing premium homes for residential and or investments purposes for Corporate executives and business owners.*

*Our Vision is to ultimately be the preferred real estate developer in Ghana,*

*Delivering consistent quality in our products and customer service is the company's focal mission*

*Our Team is dedicated to providing excellent experience to ensure value, transparency and satisfaction is achieved.*

*For further information about our new products and services, contact us via the details below.*

*Whitewall Properties Limited*

*Head Office,*

*18 Osu Badu Street, Dzorwulu,*

*Accra, Ghana*

*+233 (0)50 7010 855*

*+233 (0)50 1501 611*

*sales@whitewallproperties.com*

*www.whitewallproperties.com*

# Our Developments

**2022**

## CHRISTINE GARDENS

*This peculiar development is made up of studios, 1 & 2 bedroom apartments plus Townhouses located in Cantonments, scheduled to be Completed 18 months after commencement, an ideal investment for all Corporate executives and Business owners. Currently SOLD OUT!!*

**2022**

## CHESTNUT COURT

*These Superb FAMILY homes are made up of 5 units of 3.5 bedroom Townhouses located in Dzorvulu. Scheduled to be Completed 12 months after commencement. An ideal home for Corporate executives and Business owners who admire Great locations and a perfect environment to raise their families. Currently selling at \$430,000*

**2020**

## PELICAN PLACE

*These Glorious FAMILY homes are made up of 2 units of 3.5 bedroom Townhouses located in East Legon, Adjiringanor. Scheduled to be Completed by December, 2020. An ideal home for Corporate executives and Business owners, a perfect environment to raise their families. Currently SOLD OUT!!*

**2020**

## BRANDON COURT

*These elegant FAMILY homes are made up of 5 units of 3.5 bedroom Townhouses located in East Legon, Adjiringanor. An ideal home for Corporate executives and Business owners, a perfect environment to raise their families. Currently SOLD OUT!!*

**2017**

## ADDISON GREENE

*These exquisite FAMILY homes are made up of 11 units of 2, 3 & 4 bedroom Townhouses located in central part of East Legon hills. An ideal home for Corporate executives and Business owners, a perfect environment to raise their families. Currently SOLD OUT!!*

**2024**

## MORTENS PLACE

*This unique development is made up of 1 & 2 bedroom apartments located in the heart of Dzorvulu scheduled for Completion within 24 months after commencement, an exclusive home for corporate executives and business owners. Currently Selling at US\$160,000*

**2022**

## MALTIMA PLACE

*These Magnificent FAMILY homes are made up of 3 units of 3.5 bedroom Townhouses located in East Legon, Adjiringanor. Scheduled for Completion 12 months after commencement, An ideal home for Corporate executives and Business owners who admire Great locations and a perfect environment to raise their families. Currently SOLD OUT!!*

**2022**

## ADAMS GREY

*These lovely FAMILY homes are made up of 20 units of 3 & 4 bedroom Townhouses located in the central part of East Legon Hills. The first phase has been Completed, the second phase is scheduled to complete by December 2021. An ideal home for Corporate executives and Business owners who admire a perfect environment to raise their families. Currently Selling at US\$200,000*

**2020**

## PINE COURT

*This Luxurious development is made up of studios, 1, 2 & 3 bedroom apartments located in the central part of Cantonments. An ideal investment for Corporate executives and Business owners. Currently SOLD OUT and Letting.*

**2018**

## HAZEL COURT

*These opulent FAMILY homes are made up of 3 units of 3.5 bedroom Townhouses located in the central part of East Legon. An ideal home for Corporate executives and Business owners, who admire Great locations and a perfect environment to raise their families. Currently SOLD OUT!!*

**2015**

## MAPLE COURT

*This Splendid development is made up of 12 units of 2 & 3 bedroom apartments, plus 6 units of 3 & 4 bedroom Townhouses located in the central part of East Legon. An ideal investment for Corporate executives and Business owners. Currently SOLD OUT and Letting.*







STANDARD DISCLAIMER: This brochure, the accompanying "Floorplans and Pricing" and marketing materials and the information contained in them does not form any contract, and while reasonable effort have been made to ensure accuracy, this cannot be guaranteed and no representation or warranty is made in that regard. The brochure and plans and any marketing material are for informational purposes only and disclosed to prospective purchases without responsibility to the seller and are not intended to be relied on. Nothing herein is intended and nor shall it be construed as an attempt by the seller to exclude or limit liability for fraud or fraudulent misrepresentation or for any other liability which cannot be excluded or limited under applicable law. The seller reserves the right to make changes in the interest of improving the overall scheme. The specification and plans of the apartment shown in the brochure and on the plans and any marketing literature is the anticipated specification and plans as at the date this brochure and any marketing literature was prepared. Any areas, measurements or distances shown in any text or plan are approximated and for informational purposes only and may be different once actually constructed. Computer generated images and photos are indicative only and cannot be guaranteed to represent the complete details of the development. Furniture shown in any computer generated images and photos is not included in sales. Any reference to alterations to or use of any part of the development is not a statement, representation or warranty that any necessary planning, building regulations or other consent has been obtained. These matters must be independently verified by the buyer. Any buyer must satisfy himself by inspection or otherwise as to the accuracy of any information given. All sales remain subject to contract. Purchase prices correct at time of publication subject to change and availability.