

THE GLADE

EAST CANTONMENTS





An Elegant Piece of the Future
THE GLADE



An Elegant Piece of the Future
THE GLADE



1 BEDROOM APARTMENTS

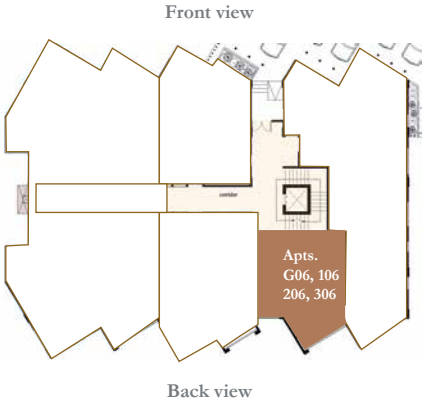
FLOOR PLANS AND PRICING

THE GLADE

1 Bedroom | Apt G06

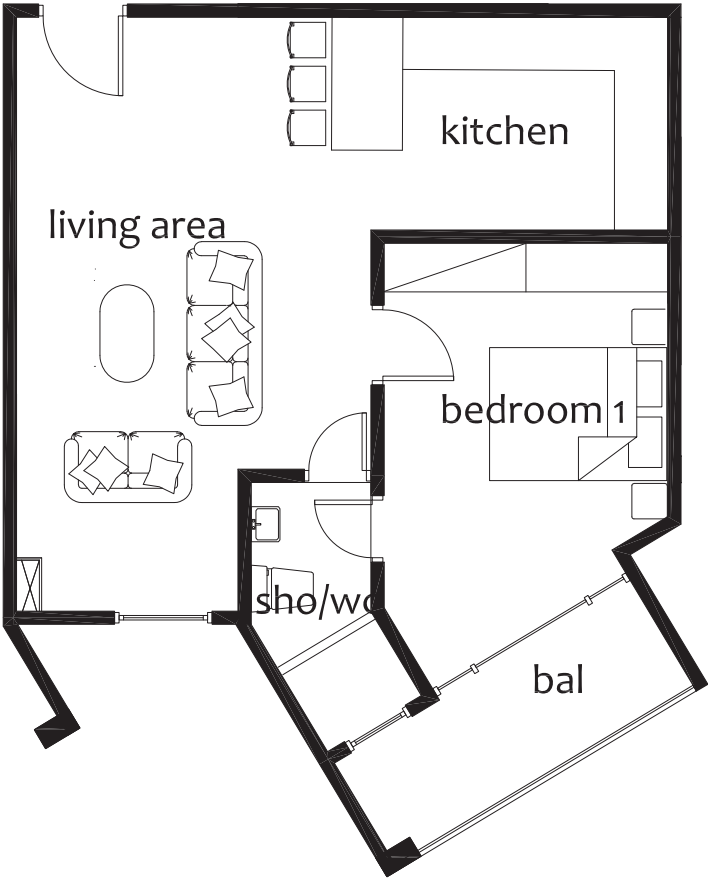
SPACES	AREA(sqm)
--------	-----------

Living Area	20sqm
Kitchen & Dining Area	12sqm
Master Bedroom	14sqm
Washroom	5sqm
Balcony	5sqm
Gross Area	56sqm
Price	\$160K



Ground - Third Floors

Typical Floor Plan

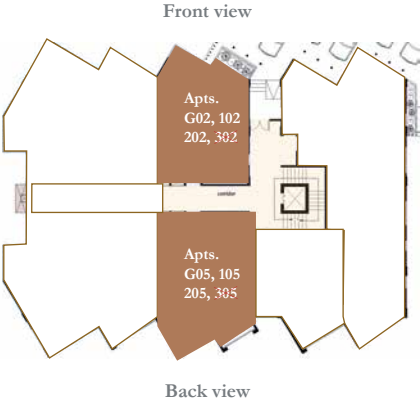


Floor G-3

1 Bedroom | Apt G02

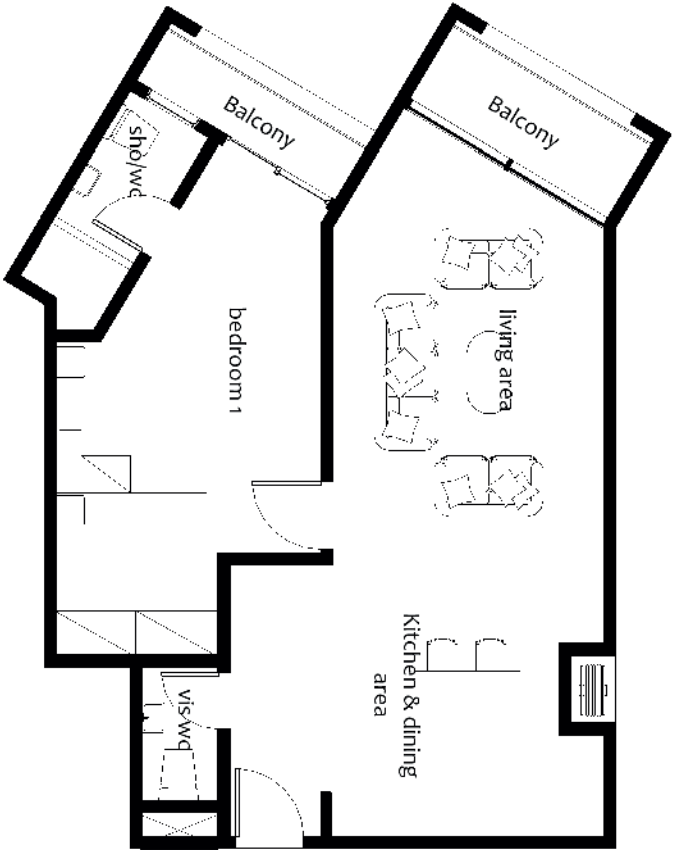
SPACES	AREA(sqm)
--------	-----------

Living Area	18sqm
Kitchen & Dining Area	16sqm
Master Bedroom	18sqm
Washrooms (2)	6sqm
Balconies (2)	7sqm
Gross Area	65sqm
Price	\$180K



Ground - Third Floors

Typical Floor Plan



Floor G-3



2 BEDROOM APARTMENTS

FLOOR PLANS AND PRICING

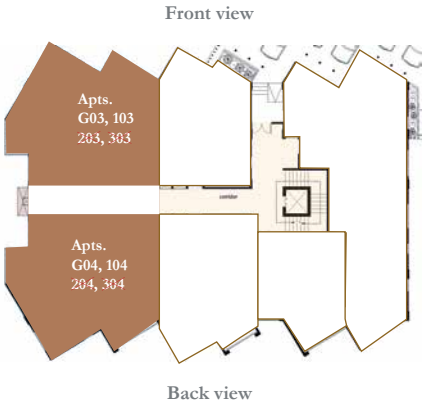
THE GLADE

2 Bedroom | Apt G03

SPACES	AREA(sqm)
--------	-----------

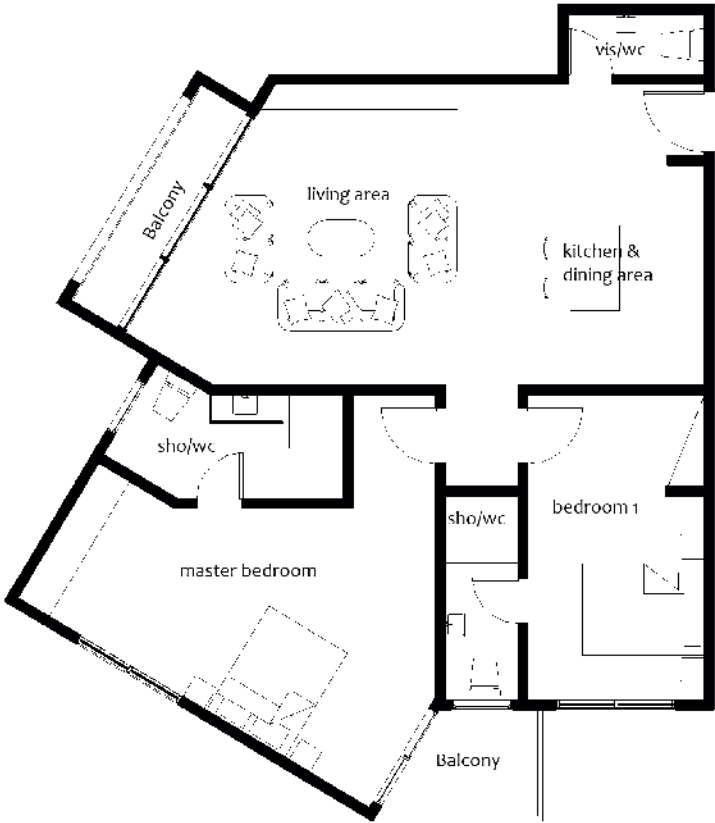
Living Area	25sqm
Kitchen & Dining Area	16sqm
Master Bedroom	25sqm
Other Bedroom	15sqm
Washrooms (2)	12sqm
Balconies (2)	7sqm

Gross Area 100sqm
Price \$280K



Ground - Third Floors

Typical Floor Plan



Floor G-3



3 BEDROOM APARTMENTS

FLOOR PLANS AND PRICING

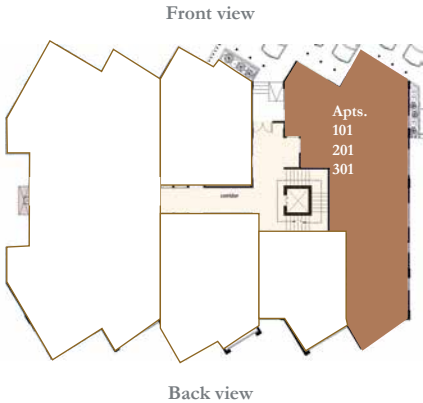
THE GLADE

3 Bedroom | Apt 101

SPACES	AREA(sqm)
--------	-----------

Living Area	28sqm
Kitchen & Dining Area	26sqm
Master Bedroom	21sqm
Other Bedrooms (2)	30sqm
Washrooms (4)	17sqm
Balconies (3)	14sqm
Study	9sqm

Gross Area 145sqm
Price \$370K



First - Third Floors

Typical Floor Plan



Floor 1-3



PENTHOUSE

FLOOR PLANS AND PRICING

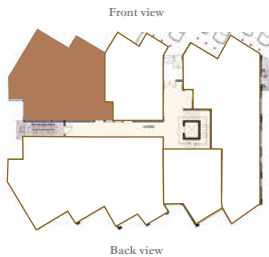
THE GLADE

3.5 Bedroom | PH

SPACES	AREA(sqm)
--------	-----------

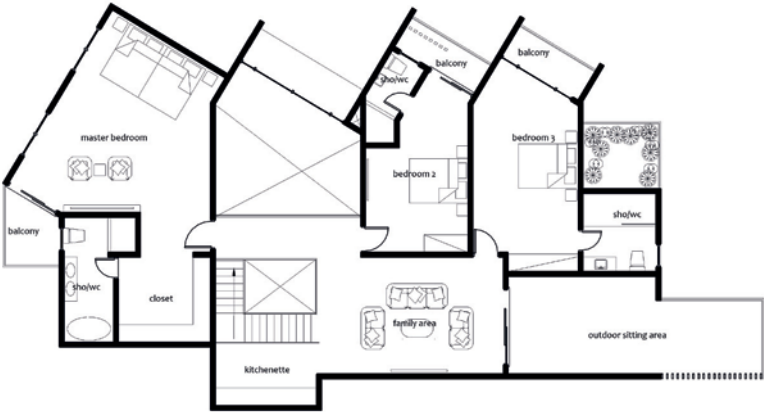
Living Area	36.sqm
Kitchen & Dining Area	32sqm
Master Bedroom	36.sqm
Other Bedrooms (2)	36.sqm
Family Area	25sqm
Walk-in Closet	9sqm
Upper Terrace	18.sqm
Washrooms (5)	23sqm
Boy's Quarters	9sqm
Pantry	7sqm
Balconies (5)	19sqm

Gross Area 250sqm
Price \$650k



Fourth - Fifth Floors

Typical Floor Plan



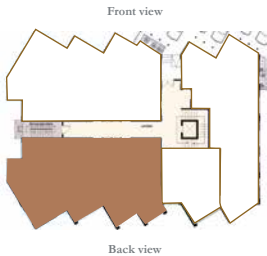
Floor 4-5

4.5 Bedroom | PH

SPACES	AREA(sqm)
--------	-----------

Living Area	36sqm
Kitchen & Dining Area	32sqm
Master Bedroom	36sqm
Other Bedrooms (2)	36sqm
Butlers Quarters	65sqm
Family Area	25sqm
Walk-in Closet	9sqm
Upper Terrace	18sqm
Washrooms (5)	23sqm
Boy's Quarters	9sqm
Pantry	7sqm
Balconies (5)	19sqm

Gross Area 315sqm
Price \$780k



Fourth - Fifth Floors

Typical Floor Plan



Floor 4-5



An Elegant Piece of the Future
THE GLADE

The Glade is the most exquisite and exclusive residential development you will find in Cantonments - Accra.

In an environment that creates a contemporary living experience for Corporate Executives and Business Owners, The Glade ultimately produces a sustainable work-life balance.

With executive 1, 2 & 3 bedroom units in a stunning apartment block located on the La Tebu Crescent Street, it offers proximity to the BEST “restaurants, shopping centers, schools, clinics and kids play areas” in a serene environment making The Glade, the perfect home for the future.

Our amenities include; Roof top recreational area with a pool, modern installations, spacious units, well sized balconies, ample car parking, property management and security services.

The Glade, Discover an elegant piece of the future today!!

THE GLADE



Development Features

Interior Features

1. *Panelled / Flush doors*
2. *Recessed ceiling lighting*
3. *Fitted Wardrobes*
4. *Air conditioning units*
5. *DSTV connection*
6. *Fibre optic internet connectivity*
7. *Fully Fitted Kitchens with Appliances; Refrigerator, Hob & Extractor, Oven, Microwave; Washing Machine.*
8. *Bathrooms with porcelain tiles.*
9. *Tempered Glass Balustrades*
10. *Water Heating Systems*

Exterior Features

1. *Gated Development*
2. *24-hour Security and Concierge Services*
3. *Roof top Recreational Area*
4. *Infinity Pool*
5. *Fitness Center*
6. *Backup Water & Power Supply*
7. *Electric Security Fencing*
8. *Property Management*
9. *Car Parking*
10. *Fire Escape Staircase*
11. *Elevator*
12. *Fire Protection and Safety System*





An Elegant Piece of the Future
THE GLADE



An Elegant Piece of the Future
THE GLADE



An Elegant Piece of the Future
THE GLADE



An Elegant Piece of the Future
THE GLADE



An Elegant Piece of the Future
THE GLADE



An Elegant Piece of the Future
THE GLADE



An Elegant Piece of the Future
THE GLADE



An Elegant Piece of the Future

THE GLADE

Buy To Let Investor

Porposal for the Buy to Let Investor

Discerning buy-to-let investors recognise that a high and sustainable yield is their priority, and understand the drivers that underpin those results.

The Glade has the perfect equation: superb location for tenants, enticing residential facilities, and a luxurious development designed ideally for rental demand, all with market leading prices and investment plans to optimise your capital.

Investment Highlights

- *Average Monthly Yield : \$2,000 - \$4,000*
- *Average Annual Yield : \$24,000 - \$48,000*
- *Average Annual Rental Yield(%) : 9% - 12%*
- *Average Annual Appreciation Rate(%) : 7%*

Standard Payments

Option 1

Reservation \$5,000

- 20% down payment
- 6 Installments (every 4 months)
- 8 Installments (every 3 months)

Flexi Payments

Option 2

Reservation \$5,000

- 20% down payment
- 80% balance proposed by buyer
(must be within 24 months period)

Mortgage Payments

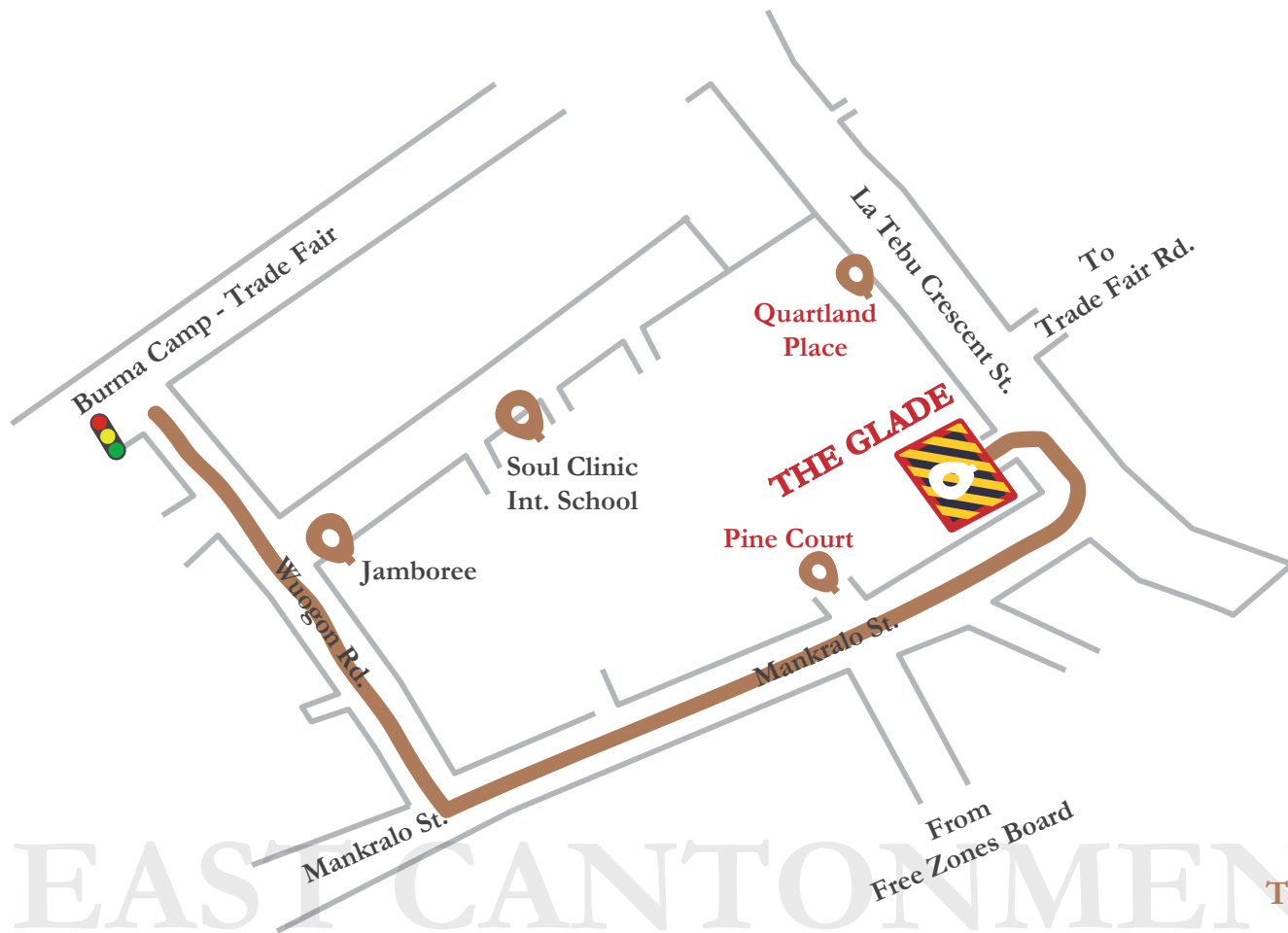
Option 3

Reservation \$5,000

- 20% -30% down payment
- 80% - 70% balance by Mortgage.

THE GLADE

East Cantonments | LOCATION



THE GLADE

The Developer

Whitewall Properties Limited

Whitewall Properties Limited is a Ghanaian owned real estate company that commenced operations in 2012 with the aim of providing premium homes for residential and or investments purposes for Corporate executives and business owners.

Our Vision is to ultimately be the preferred real estate developer in Ghana,

Delivering consistent quality in our products and customer service is the company's focal mission

Our Team is dedicated to providing excellent experience to ensure value, transparency and satisfaction is achieved.

For further information about our new products and services, contact us via the details below.

Whitewall Properties Limited

Head Office,

18 Osu Badu Street, Dzorwulu,

Accra, Ghana

+233 (0)50 956 8200

+233 (0)50 150 1611

sales@whitewallproperties.com

www.whitewallproperties.com

Our Developments

2022

CHRISTINE GARDENS

This peculiar development is made up of studios, 1 & 2 bedroom apartments plus Townhouses located in Cantonments, scheduled to be Completed 18 months after commencement, an ideal investment for all Corporate executives and Business owners. Currently SOLD OUT!!

2021

CHESTNUT COURT

These Superb FAMILY homes are made up of 5 units of 3.5 bedroom Townhouses located in Dzorvulu. Scheduled to be Completed 12 months after commencement. An ideal home for Corporate executives and Business owners who admire Great locations and a perfect environment to raise their families. Currently SOLD OUT!!

2020

PELICAN PLACE

These Glorious FAMILY homes are made up of 2 units of 3.5 bedroom Townhouses located in East Legon, Adjirringanor. Scheduled to be Completed by December, 2020. An ideal home for Corporate executives and Business owners, a perfect environment to raise their families. Currently SOLD OUT!!

2020

BRANDON COURT

These elegant FAMILY homes are made up of 5 units of 3.5 bedroom Townhouses located in East Legon, Adjirringanor. An ideal home for Corporate executives and Business owners, a perfect environment to raise their families. Currently SOLD OUT!!

2017

ADDISON GREENE

These exquisite FAMILY homes are made up of 11 units of 2, 3 & 4 bedroom Townhouses located in central part of East Legon hills. An ideal home for Corporate executives and Business owners, a perfect environment to raise their families. Currently SOLD OUT!!



2023

MORTENS PLACE

This unique development is made up of 1 & 2 bedroom apartments located in the heart of Dzorvulu, scheduled for Completion 24 months after commencement, an exclusive home for corporate executives and business owners. Now Selling at a starting price of US\$160,000



2021

MALTIMA PLACE

These Magnificent FAMILY homes are made up of 3 units of 3.5 bedroom Townhouses located in East Legon, Adjirringanor. Scheduled for Completion 12 months after commencement, An ideal home for Corporate executives and Business owners who admire Great locations and a perfect environment to raise their families. Currently SSOLD OUT!!



2021

ADAMS GREY

These lovely FAMILY homes are made up of 20 units of 3 & 4 bedroom Townhouses located in the central part of East Legon Hills. The first phase has been Completed, the second phase is scheduled to complete by December 2021. An ideal home for Corporate executives and Business owners who admire a perfect environment to raise their families. Now Selling at a starting price of US\$200,000



2020

PINE COURT

This Luxurious development is made up of studios, 1, 2 & 3 bedroom apartments located in the central part of Cantonments. An ideal investment for Corporate executives and Business owners. Currently SOLD OUT and Letting.



2018

HAZEL COURT

These opulent FAMILY homes are made up of 3 units of 3.5 bedroom Townhouses located in the central part of East Legon. An ideal home for Corporate executives and Business owners, who admire Great locations and a perfect environment to raise their families. Currently SOLD OUT!!



2015

MAPLE COURT

This Splendid development is made up of 12 units of 2 & 3 bedroom apartments, plus 6 units of 3 & 4 bedroom Townhouses located in the central part of East Legon. An ideal investment for Corporate executives and Business owners. Currently SOLD OUT and Letting.



THE GLADE



STANDARD DISCLAIMER: This brochure, the accompanying "Floorplans and Pricing" and marketing materials and the information contained in them does not form any contract, and while reasonable effort have been made to ensure accuracy, this cannot be guaranteed and no representation or warranty is made in that regard. The brochure and plans and any marketing material are for informational purposes only and disclosed to prospective purchases without responsibility to the seller and are not intended to be relied on. Nothing herein is intended and nor shall it be constructed as an attempt by the seller to exclude or limit liability for fraud or fraudulent misrepresentation or for any other liability which cannot be excluded or limited under applicable law. The seller reserves the right to make changes in the interest of improving the overall scheme. The specification and plans of the apartment shown in the brochure and on the plans and any marketing literature is the anticipated specification and plans as at the date this brochure and any marketing literature was prepared. Any areas, measurements or distances shown in any text or plan are approximated and for informational purposes only and may be different once actually constructed. Computer generated images and photos are indicative only and cannot be guaranteed to represent the complete details of the development. Furniture shown in any computer generated images and photos is not included in sales. Any reference to alterations to or use of any part of the development is not a statement, representation or warranty that any necessary planning, building regulations or other consent has been obtained. These matters must be independently verified by the buyer. Any buyer must satisfy himself by inspection or otherwise as to the accuracy of any information given. All sales remain subject to contract. Purchase prices correct at time of publication subject to change and availability.