

# MALTIMA

PLACE - EAST LEGON



# INTRODUCING

A photograph of a Black couple in a living room. The woman, in the foreground, is wearing a blue cable-knit sweater and has a joyful expression, looking down and to the right. The man, standing behind her, is wearing a light brown sweater and has his arms crossed, looking at her with a gentle smile. The background shows a window with blinds and a white shelving unit.

*Discover True Comfort*  
**MALTIMA PLACE**



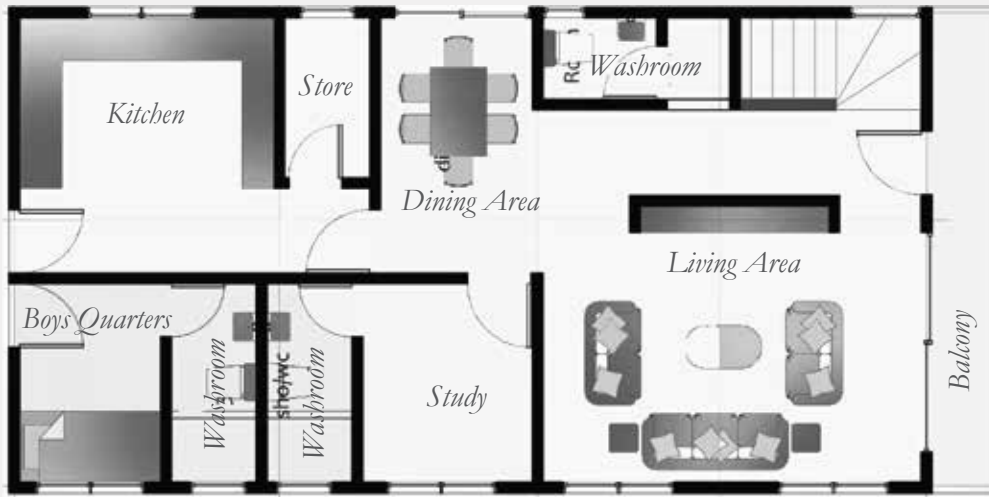
*Discover True Comfort*  
**MALTIMA PLACE**

# Floor Plans

3.5 Bedroom Townhouses

MALTIMA PLACE

# 3.5 Bedroom Townhouse | Ground Floor

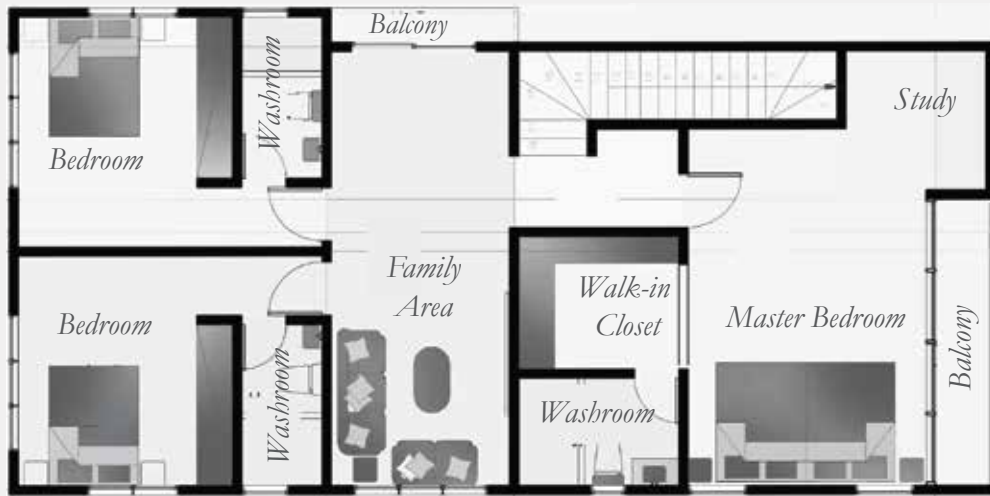


Total Gross Area  
**270sqm**

SPACES	AREA(sqm)
Living & Dining Area	36sqm
Balcony	14sqm
Washrooms(3)	5sqm
Study	10sqm
Kitchens & Store	18sqm
Circulation Area	19sqm
<b>Gross Area</b>	<b>112sqm</b>

MALTIMA PLACE

## 3.5 Bedroom Townhouse | First Floor



Total Gross Area  
**270sqm**

SPACES	AREA(sqm)
Master Bedroom	30sqm
Other Bedrooms(2)	20sqm
Washrooms(3)	5sqm
Family Area	22sqm
Walk-in Closet	7sqm
Balcony	6sqm
<b>Gross Area</b>	<b>132sqm</b>

MALTIMA PLACE





*Discover True Comfort*  
**MALTIMA PLACE**



*Discover True Comfort*  
**MALTIMA PLACE**





*Discover True Comfort*  
**MALTIMA PLACE**



*Living & Dining Areas*  
**MALTIMA PLACE**



*Kitchen Area*  
**MALTIMA PLACE**



EAT  
LIVE  
YOUR  
LIFE

*Dining Areas*  
**MALTIMA PLACE**





*Master Bedroom*

**MALTIMA PLACE**





*Discover True Comfort*  
**MALTIMA PLACE**

*Maltima Place is a classic townhouse residential development located in the heart of East Ilegon, Adjiringanor. It features three elegant family oriented homes consisting of 3 bedrooms plus a boy's quarters which offers a perfect environment for ensuring work-life balance between workplace, children's school, church place and recreational centers. Create your home at Maltima Place and enjoy these and many other benefits which this development has to offer, scheduled for completion by December 2021.*

### **Interior Features**

- 1. Panelled / Flush doors*
- 2. Recessed ceiling lighting*
- 3. Wardrobes in all bedrooms*
- 4. Aircondition units*
- 5. DSTV connection*
- 6. Internet connectivity*
- 7. Fully Fitted Kitchen and Appliances with Built-in Fridge and Freezer; Cooker Unit & Extractor, Oven, Microwave, Washing Machine.*
- 8. Bathrooms with porcelain tiles*
- 9. Tempered Glass Balustrades*

### **Exterior Features**

- 1. Gated Development*
- 2. Security Post*
- 3. Backup Water Supply*
- 4. Electric Security Fencing*
- 5. Spacious Car Parking*
- 6. Fire Protection and Safety System*
- 7. Self Compound Homes*

**MALTIMA PLACE**



*Master Bathrooms*

**MALTIMA PLACE**

## Pricing & Payment Plans



House No.1  
270SQM

---

**\$380K**



House No.2  
234SQM

---

**SOLD**



House No.3  
234SQM

---

**SOLD**

### Standard Payments

#### Option 1

*25% down payment*

- *25% deposit by 3 Month*
- *25% deposit by 6 Month*
- *25% deposit by 12 Month*

### Flexi Payments

#### Option 2

*50% down payment*

- *50% balance spread over 12 Months*

#### Option 3

*100% Cash payment*

- *Attracts a whopping 7% Discount*

### Mortgage Payments

#### Option 4

*30% down payment*

- *70% balance by Mortgage.*



# Adjiringanor | LOCATION

*Maltima Place is located in Adjiringanor, East Legon - Accra, just an 7 minute drive from the A&C mall and a short walk from the Accra College of Medicine, an ideal home for entrepreneurs who admire great locations and a perfect environment to raise their families...*



**MALTIMA PLACE**



# The Developer

## *Whitewall Properties Limited*

*Whitewall Properties Limited is a Ghanaian owned real estate company that commenced operations in 2012 with the aim of providing premium homes for residential and or investments purposes for Corporate executives and business owners.*

*Our Vision is to ultimately be the preferred real estate developer in Ghana, Delivering consistent quality in our products and customer service is the company's focal mission Our Team is dedicated to providing excellent experience to ensure value, transparency and satisfaction is achieved. For further information about our new products and services, contact us via the details below.*

*Whitewall Properties Limited*

*Head Office,*

*18 Osu Badu Street, Dzorwulu,*

*Accra, Ghana*

*+233 (0)50 7010 855*

*+233 (0)50 1501 611*

*sales@whitewallproperties.com*

*www.whitewallproperties.com*

# Our Developments

**2022**

## CHRISTINE GARDENS

*This peculiar development is made up of studios, 1 & 2 bedroom apartments plus Townhouses located in Cantonments, scheduled to be Completed 18 months after commencement, an ideal investment for all Corporate executives and Business owners. Currently SOLD OUT!!*

**2021**

## CHESTNUT COURT

*These Superb FAMILY homes are made up of 5 units of 3.5 bedroom Townhouses located in Dzorvulu, Scheduled to be Completed 12 months after commencement. An ideal home for Corporate executives and Business owners who admire Great locations and a perfect environment to raise their families. Currently SOLD OUT!!*

**2020**

## PELICAN PLACE

*These Glorious FAMILY homes are made up of 2 units of 3.5 bedroom Townhouses located in East Legon, Adjirringanor. Scheduled to be Completed by December, 2020. An ideal home for Corporate executives and Business owners, a perfect environment to raise their families. Currently SOLD OUT!!*

**2020**

## BRANDON COURT

*These elegant FAMILY homes are made up of 5 units of 3.5 bedroom Townhouses located in East Legon, Adjirringanor. An ideal home for Corporate executives and Business owners, a perfect environment to raise their families. Currently SOLD OUT!!*

**2017**

## ADDISON GREENE

*These exquisite FAMILY homes are made up of 11 units of 2, 3 & 4 bedroom Townhouses located in central part of East Legon hills. An ideal home for Corporate executives and Business owners, a perfect environment to raise their families. Currently SOLD OUT!!*



**2023**

## MORTENS PLACE

*This unique development is made up of 1 & 2 bedroom apartments located in the heart of Dzorvulu, scheduled for Completion 24 months after commencement, an exclusive home for corporate executives and business owners. Now Selling at a starting price of US\$160,000*



**2021**

## MALTIMA PLACE

*These Magnificent FAMILY homes are made up of 3 units of 3.5 bedroom Townhouses located in East Legon, Adjirringanor. Scheduled for Completion 12 months after commencement, An ideal home for Corporate executives and Business owners who admire Great locations and a perfect environment to raise their families. Now Selling at a starting price of US\$380,000*



**2021**

## ADAMS GREY

*These lovely FAMILY homes are made up of 20 units of 3 & 4 bedroom Townhouses located in the central part of East Legon Hills. The first phase is scheduled to be Completed by May, 2021 and second phase by December 2021. An ideal home for Corporate executives and Business owners who admire a perfect environment to raise their families. Now Selling at a starting price of US\$145,000*



**2020**

## PINE COURT

*This Luxurious development is made up of studios, 1, 2 & 3 bedroom apartments located in the central part of Cantonments, An ideal investment for Corporate executives and Business owners. Currently SOLD OUT and Letting.*



**2018**

## HAZEL COURT

*These opulent FAMILY homes are made up of 3 units of 3.5 bedroom Townhouses located in the central part of East Legon. An ideal home for Corporate executives and Business owners, who admire Great locations and a perfect environment to raise their families. Currently SOLD OUT!!*



**2015**

## MAPLE COURT

*This Splendid development is made up of 12 units of 2 & 3 bedroom apartments, plus 6 units of 3 & 4 bedroom Townhouses located in the central part of East Legon. An ideal investment for Corporate executives and Business owners. Currently SOLD OUT and Letting.*



years

**MALTIMA PLACE**



050 7010 855/050 1501611  
[www.whitewallproperties.com](http://www.whitewallproperties.com)  
No.18 Osu-Badu Street, Dzorwulu

STANDARD DISCLAIMER: This brochure, the accompanying "Floorplans and Pricing" and marketing materials and the information contained in them does not form any contract, and while reasonable effort has been made to ensure accuracy, this cannot be guaranteed and no representation or warranty is made in that regard. The brochure and plans and any marketing material are for information purposes only and disclosed to prospective purchasers without responsibility to the seller and are not intended to be relied on. Nothing herein is intended and nor shall it be construed as an attempt by the seller to exclude or limit liability for fraud or fraudulent misrepresentation or for any other liability which cannot be excluded or limited under applicable law. The seller reserves the right to make changes in the interest of improving the overall scheme. The specification and plans of the townhouses shown in the brochure and on the plans and any marketing literature is the anticipated specification and plans as at the date this brochure and any marketing literature was prepared. Any areas, measurements or distances shown in any text or plan are approximate only and for information purposes only and may be different once actually constructed. Computer generated images and photos are indicative only and cannot be guaranteed to represent the complete details of the development. Furniture shown in any computer generated images and photos is not included in sales. Any reference to alterations to or use of any part of the development is not a statement, representation or warranty that any necessary planning, building regulations or other consent has been obtained. These matters must be independently verified by the buyer. Any buyer must satisfy himself by inspection or otherwise as to the accuracy of any information given. All sales remain subject to contract. Purchase prices correct at time of publication subject to change and availability.