

# CHESTNUT

COURT - DZORWULU





*Good Home, Good Life!!*

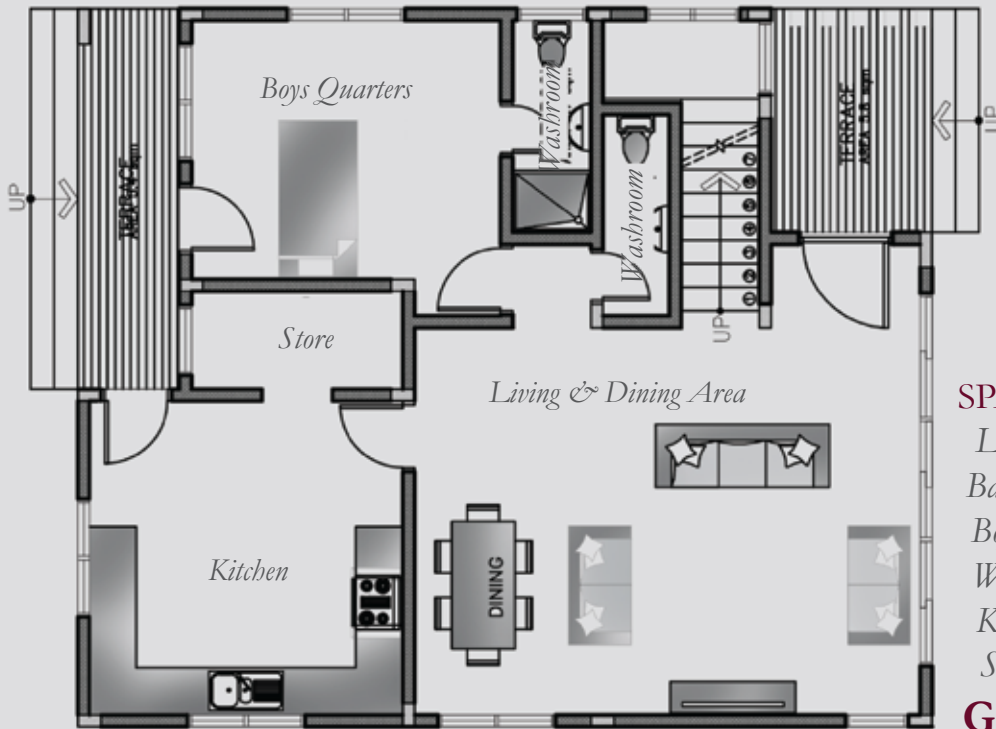
**CHESTNUT COURT**

# Floor Plans

3.5 BEDROOM TOWNHOUSES

CHESTNUT COURT

# Ground Floor | 3.5 BEDROOM

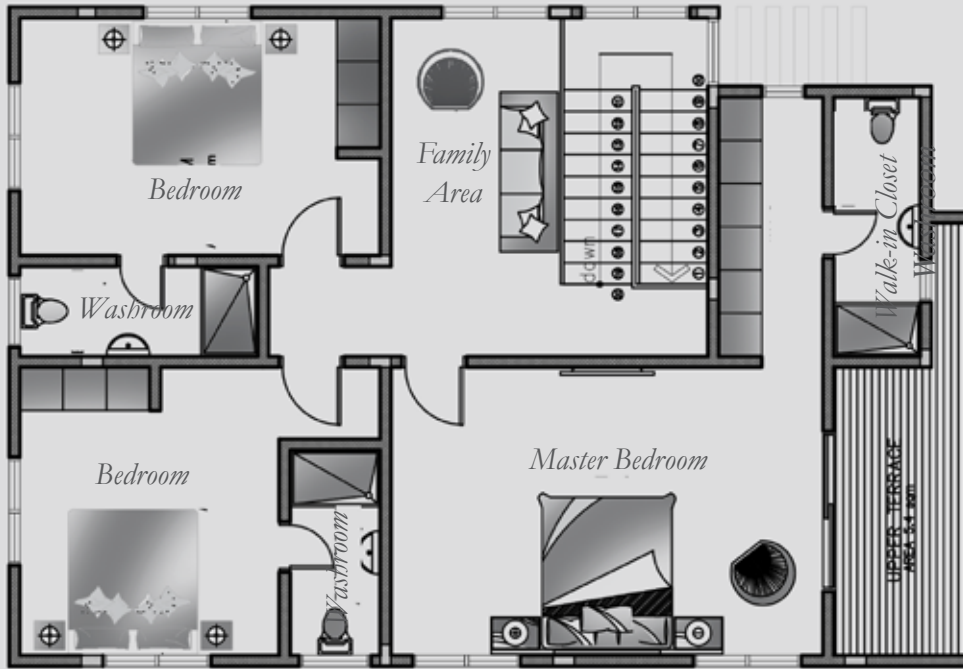


**Total Gross Area**  
**217sqm**

SPACES	AREA(sqm)
Living & Dining Area	34sqm
Balconies(2)	6.3sqm
Boys Quarters	14sqm
Washrooms(2)	3sqm
Kitchen	16sqm
Store	4sqm
<b>Gross Area</b>	<b>100sqm</b>

**CHESTNUT COURT**

# First Floor | 3.5 BEDROOM



Total Gross Area  
**217sqm**

SPACES	AREA(sqm)
Balcony	9sqm
Master Bedroom	30sqm
Other Bedrooms(2)	17sqm
Washrooms(3)	5sqm
Family Area	11sqm
<b>Gross Area</b>	<b>117sqm</b>

**CHESTNUT COURT**



*Satisfaction to Your Hearts, not Your Eyes*  
**CHESTNUT COURT**



*Living & Dining Area*

**CHESTNUT COURT**



*Kitchen Area*

CHESTNUT COURT





*Comfort That Lasts Forever*  
**CHESTNUT COURT**



*Family Area*  
**CHESTNUT COURT**



*Master Bedroom*

CHESTNUT COURT



*Master Bathroom*

**CHESTNUT COURT**



*Designed to suit You*  
**CHESTNUT COURT**

**Chestnut Court** is an elegant townhouse residential development located in the heart of Dzorwulu. Designed as a miniature heaven, Chestnut Court provides the comforts of secured peaceful living, beautiful modern architecture, top of the range fixtures with sublime finishing. Nestled around this pristine development is also an assorted array of convenience services such as first-class schools, restaurants, banking services and retail shopping centres. Relocate to Chestnut Court in our family sized 3-bedroom townhouse and experience a truly redefined life, schedule for completion by December 2021.

### **Interior Features**

1. *Panelled / Flush doors with hardware*
2. *Recessed ceiling lighting*
3. *Wardrobes in all bedrooms*
4. *Air conditioning units*
5. *DSTV connection*
6. *Internet connectivity*
7. *Fully Fitted Kitchen and Appliances with Built-in Fridge and Freezer; Cooker Unit & Extractor, Oven, Microwave, Washing Machine.*
8. *Bathrooms with porcelain tiles.*
9. *Tempered Glass Balustrades*

### **Exterior Features**

1. *Gated Development*
2. *24-hour Security*
3. *Backup Water & Power Supply*
4. *Electric Security Fencing*
5. *Property Management*
6. *Car Parking*
8. *Comprehensive Fire Protection and Safety System*
9. *Swimming Pool*

**CHESTNUT COURT**

# Pricing & Payment Plans



House No.1  
217SQM  
**\$430K**



House No.1  
217SQM  
**\$430K**



House No.3  
217SQM  
**SOLD**



House No.4  
217SQM  
**SOLD**



House No.5  
217SQM  
**SOLD**

## Standard Payments

### Option 1

*25% down payment*

- 25% deposit by 3 Month
- 25% deposit by 6 Month
- 25% deposit by 12 Month

## Flexi Payments

### Option 2

*50% down payment*

- 50% balance spread over 12 Months

### Option 3

*100% Cash payment*

- *Attracts a whopping 7% Discount*

## Mortgage Payments

### Option 4

*30% down payment*

- *70% balance by Mortgage.*

# The Developer

## *Whitewall Properties Limited*

*Whitewall Properties Limited is a Ghanaian owned real estate company that commenced operations in 2012 with the aim of providing world class residential homes for the middle and high-end markets.*

*Our Vision is to ultimately be the preferred real estate developer in Ghana,  
Delivering consistent quality in our products and customer service is the company's focal mission  
Our Team is dedicated to providing excellent experience to ensure value, transparency and satisfaction is achieved.  
For further information about our new products and services, contact us via the details below.*

*Whitewall Properties Limited*

*Head Office,*

*18 Osu Badu Street, Dzorwulu,*

*Accra, Ghana*

*+233 (0)50 7010 855*

*+233 (0)50 1501 611*

*sales@whitewallproperties.com*

*www.whitewallproperties.com*



# Our Developments

**2022**

## CHRISTINE GARDENS

*This peculiar development is made up of studios, 1 & 2 bedroom apartments plus Townhouses located in Cantonments, scheduled to be Completed 18 months after commencement, an ideal investment for all Buyers. Now Selling at a starting price of US\$130,000*

**2021**

## CHESTNUT COURT

*These Superb FAMILY homes are made up of 5 units of 3.5 bedroom Townhouses located in Dzorvulu. Scheduled to be Completed 12 months after commencement. An ideal home for Entrepreneurs who admire Great locations and a perfect environment to raise their families. Now Selling at a starting price of US\$430,000*

**2020**

## PELICAN PLACE

*These Glorious FAMILY homes are made up of 2 units of 3.5 bedroom Townhouses located in East Legon, Adjirringanor. Scheduled to be Completed by December, 2020. An ideal home for Entrepreneurs who admire Great locations and a perfect environment to raise their families. Now Selling at a starting price of US\$360,000*

**2020**

## BRANDON COURT

*These elegant FAMILY homes are made up of 5 units of 3.5 bedroom Townhouses located in East Legon, Adjirringanor. An ideal home for Entrepreneurs who admire Great locations and a perfect environment to raise their families. Currently SOLD OUT!!*

**2017**

## ADDISON GREENE

*These exquisite FAMILY homes are made up of 11 units of 2, 3 & 4 bedroom Townhouses located in central part of East Legon hills. An ideal home for Entrepreneurs who admire Great locations and a perfect environment to raise their families. Currently SOLD OUT!!*



**2022**

## ARLINGTON COURT

*This unique development is made up of 1, 2 & 3 bedroom apartments located in the heart of East Legon, scheduled to be Completed 24 months after commencement, an ideal investment for all Buyers. Now Selling at a starting price of US\$120,000*

**2021**

## MALTIMA PLACE

*These Magnificent FAMILY homes are made up of 3 units of 3.5 bedroom Townhouses located in East Legon, Adjirringanor. Scheduled to be Completed 12 months after commencement, An ideal home for Entrepreneurs who admire Great locations and a perfect environment to raise their families. Now Selling at a starting price of US\$320,000*

**2020**

## ADAMS GREY

*These lovely FAMILY homes are made up of 20 units of 2, 3 & 4 bedroom Townhouses located in the central part of East Legon Hills. The first phase is scheduled to be Completed by December, 2020 and second phase by December 2021. An ideal home for Entrepreneurs who admire Great locations and a perfect environment to raise their families. Now Selling at a starting price of US\$145,000*

**2020**

## PINE COURT

*This Luxurious development is made up of studios, 1, 2 & 3 bedroom apartments located in the central part of Cantonments. An ideal investment for all Buyers. Currently SOLD OUT and Letting.*

**2018**

## HAZEL COURT

*These opulent FAMILY homes are made up of 3 units of 3.5 bedroom Townhouses located in the central part of East Legon. An ideal home for Entrepreneurs who admire Great locations and a perfect environment to raise their families. Currently SOLD OUT!!*

**2015**

## MAPLE COURT

*This Splendid development is made up of 12 units of 2 & 3 bedroom apartments plus 6 units 3 & 4 bedroom Townhouses located in the central part of East Legon. An ideal investment for all Buyers. Currently SOLD OUT and Letting.*



**CHESTNUT COURT**

# Dzorwulu | LOCATION



**CHESTNUT COURT**



050 7010 855/050 1501611  
[www.whitewallproperties.com](http://www.whitewallproperties.com)  
No.18 Osu-Badu Street, Dzorwulu

STANDARD DISCLAIMER: This brochure, the accompanying "Floorplans and Pricing" and marketing materials and the information contained in them does not form any contract, and while reasonable effort has been made to ensure accuracy, this cannot be guaranteed and no representation or warranty is made in that regard. The brochure and plans and any marketing material are for information purposes only and disclosed to prospective purchasers without responsibility to the seller and are not intended to be relied on. Nothing herein is intended and nor shall it be construed as an attempt by the seller to exclude or limit liability for fraud or fraudulent misrepresentation or for any other liability which cannot be excluded or limited under applicable law. The seller reserves the right to make changes in the interest of improving the overall scheme. The specification and plans of the townhouses shown in the brochure and on the plans and any marketing literature is the anticipated specification and plans as at the date this brochure and any marketing literature was prepared. Any areas, measurements or distances shown in any text or plan are approximate only and for information purposes only and may be different once actually constructed. Computer generated images and photos are indicative only and cannot be guaranteed to represent the complete details of the development. Furniture shown in any computer generated images and photos is not included in sales. Any reference to alterations to or use of any part of the development is not a statement, representation or warranty that any necessary planning, building regulations or other consent has been obtained. These matters must be independently verified by the buyer. Any buyer must satisfy himself by inspection or otherwise as to the accuracy of any information given. All sales remain subject to contract. Purchase prices correct at time of publication subject to change and availability.